

AI Trust Summit 2026

Bridging the Enterprise AI Trust Chasm





Eleanor Treharne-Jones

Chief Executive Officer, Bigeye

Gartner predicts **over 40%** of
Agentic AI projects **will be cancelled**
by end of 2027

[Gartner, 2025](#)

Large enterprises need controls to deploy AI at scale

"We need confidence in the data before we expand usage of AI"

F500 Industrial Equipment Manufacturer

"With Copilot Studio, we can't see what the agents are doing. It's a black box."

We need that visibility for compliance."

Big Four Accounting Firm

"We have extremely sensitive customer data - pricing information that's contractually protected. We need to ensure agents never touch that."

F500 Industrial Equipment Manufacturer

"Our biggest fear is that an agent will access and expose customer PII. We have strict regulatory requirements and can't afford a mistake."

Private mortgage company serving 2.5M homes

This is the Enterprise AI Trust chasm

Enterprise AI today

AI project abandonment jumped from 17% to 42% YoY ([S&P Global](#))

Data leakage
Poor governance
Lack of risk controls
Focus on low risk low value use cases

The promise of AI

KPMG projects AI will add [\\$2.84T to US GDP](#) by 2030

Confidence vs **Certainty**

1. Death of a Salesman Tony winners Nathan Lane and Laurie Metcalf star as Willy and Linda Loman in Joe Mantello's production of Arthur Miller's American classic. [Broadway.com](#)

The show opened April 9, 2026 at the Winter Garden Theatre. [Playbill](#)

2. The Fear of 13 Academy Award winner Adrien Brody and Tessa Thompson star in Lindsey Ferrentino's visceral play, inspired by the true story of Nick Yarris, a man who spent more than two decades on death row for a crime he did not commit. [Broadway.com](#) It opens April 15 at the James Earl Jones Theatre.

3. Proof A revival of the Tony Award and Pulitzer Prize winning play, starring Ayo Edebiri, Don Cheadle, Jin Ha, and Kara Young — a story of a genius woman dealing with her father's legacy. [Playbill](#) It opens April 16 at the Booth Theatre.

4. Titanique The smash Off-Broadway hit makes its way to Broadway, docking at the St. James Theatre for a limited engagement. With Marla Mindelle reprising her take on Céline Dion, the passenger log also features Jim Parsons, Deborah Cox, Frankie Grande, and Melissa Barrera. [Ticketmaster](#) It opens April 12.

5. Every Brilliant Thing Tony winner Daniel Radcliffe stars in the Broadway premiere of this exhilarating and heartwarming play about a man looking back on his life. Following Radcliffe's run, Law & Order: SVU star Mariska Hargitay will make her Broadway debut from May 26 through June 28. [Broadway.com](#)

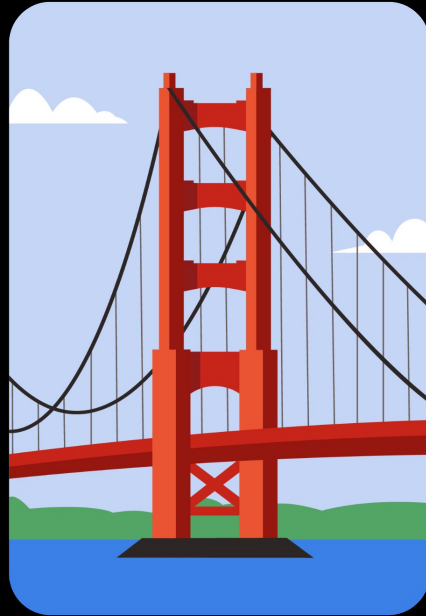
A wrong forecast is **inconvenient.**



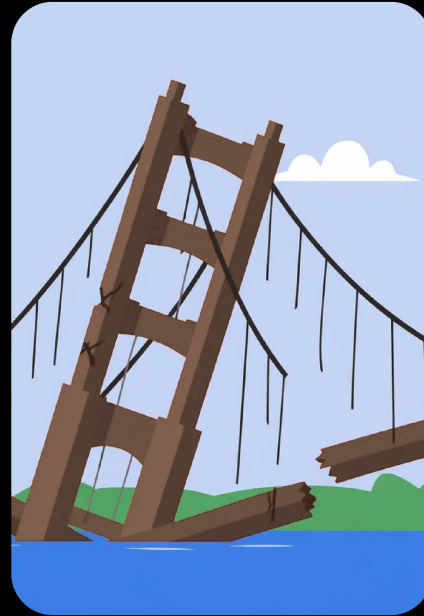
A wrong forecast is **inconvenient.**



A wrong forecast is **inconvenient.**

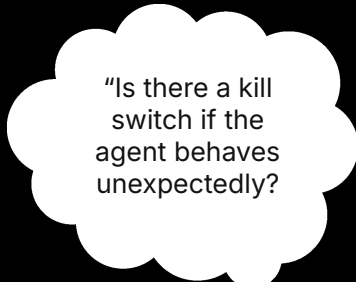


A wrong forecast is **inconvenient**.
A flawed bridge is **catastrophic**.



Three Personas

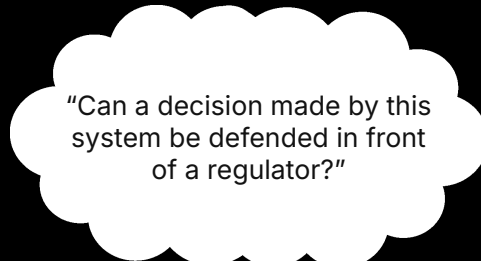
What they're really asking



"Is there a kill switch if the agent behaves unexpectedly?"




**Chief Information
Security Officer**



"Can a decision made by this system be defended in front of a regulator?"



Chief Risk Officer

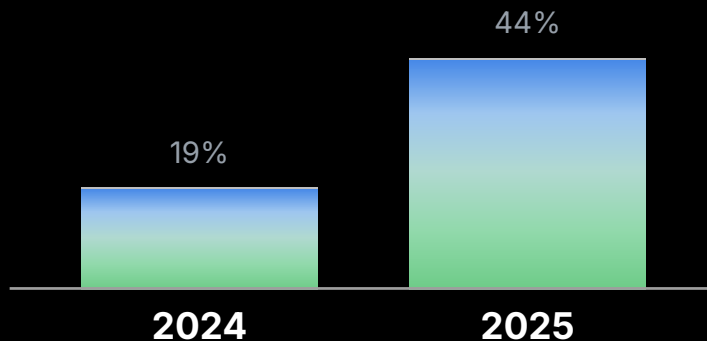


"Why hasn't this pilot shipped yet?"



Supply Chain Manager

As enterprises pushed AI to production, data quality became the #1 concern



Data quality issues went from a bottom third concern to the top barrier to enterprise AI adoption in 2025

[BARC "Lessons From the Leading Edge" Study, 2025](#)

AI agents don't just analyze data; they act on it. They power workflows, make decisions & handle customer tasks autonomously.

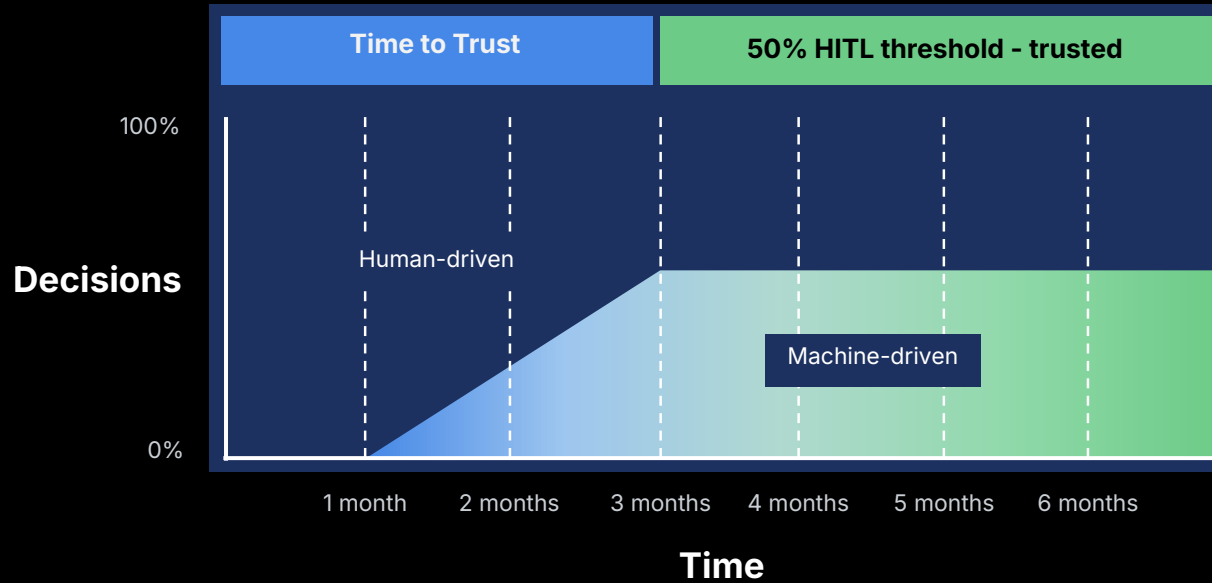
The bottleneck isn't models - it's control over how agents use data.

AI Data Readiness Model

Capability	Unaware (LEAST MATURE)	Aware	Emerging	Managed	Operational (MOST MATURE)
Data Visibility	No or little visibility into AI data usage	Awareness of what data sources AI has access to	Systematic inventory of AI data sources	Comprehensive data cataloging with ownership	Real time monitoring of what data is being accessed by AI
Data Controls	No or little restrictions on AI data access	Informal guidelines for data use	Light controls and basic approval processes	Structured policies with consistent enforcement	Automated guardrails with real-time enforcement
Quality Management	Quality issues generally discovered after problems occur	Manual quality checks intermittently	Regular quality monitoring for key datasets	Systematic quality validation processes	Continuous quality assurance integrated into workflows
Risk Assessment	Unaware of full scope of data-related AI risks	Recognizes risks but no systematic approach	Basic risk identification and documentation	Structured risk management with regular reviews	Comprehensive risk monitoring with automated alerts

Time to Trust

Time to Trust Achieved with 50% HITL Example



Agent Trust Score

AI decision risk

Percentage of prompts where agent responses were influenced by data with DQ issues or SDS findings

18% of prompts influenced by problematic data

762 of 4,218 prompts this period



■ DQ issues only (9%) ■ SDS findings only (5%) ■ Both DQ + SDS (4%) ■ Clean (82%)

By data asset By agent

DATA ASSET	WARNING TYPE	PROMPTS AFFECTED	% OF TOTAL
ANALYTICS.USER_EVENTS	DQ	 218	5.2%
HR.EMPLOYEES	DQ + SDS	 170	4.0%
CRM.OPPORTUNITIES	DQ	 135	3.2%
FINANCE.TRANSACTIONS	SDS	 109	2.6%
HR.BENEFITS	SDS	 82	1.9%
MARKETING.CAMPAIGNS	DQ	 48	1.1%



Confidence got us here.
Certainty is what scales.

Our mission

- Make enterprise — Enterprises have the biggest impact on society and hardest problems to solve.
- AI trusted — AI is only as good as the data it runs on.
- by default — AI adoption is dependent on trust



SCHEDULE

11.00-
11.30AM

**AI Trust Summit:
Opening Keynote**

With Eleanor Treharne-Jones

11.30-
12.00PM

**Scaling “Think Big” AI: Closing the Gap
Between Agentic ROI and Enterprise Risk**

With Ibrahim Itani

12.00-
12.45PM

**The Policy Requirements Every AI
Leader Must Address Before Scale**

With ShanShan Pa, Ray Everett,
Simon McDougall and Matthew Coleman

1.00-
1.30PM

**The Executive Path to “Yes” From Security:
How Leaders Get Agents Approved**

With Stephen Booth and Joan Pepin

1.30-
2.00PM

**We Went From Everything-On-Paper to
Agentic AI. Here’s What Happened**

With Miles Braddock and Egor Gryaznov

2.00-
2.45PM

**The Enterprise AI Stack: The Market
Map Every AI Leader Needs**

With James Harding, Francois Lopitiaux,
Alex Drag, Kyle Kirwan and Rashmi Ramesh

3.00-
3.30PM

**Trustworthy AI for Regulated Industries
(From the People Actually Building It)**

With Burak Aydin, Adam Nilsen and Drew Stark

3.30-
4.00PM

**Why AI Initiatives Fail
(and How to Get Yours Right)**

With Saurav Sen and Jim Barker

4.00-
4.30PM

**AI Trust Summit:
Closing Keynote**

With Eleanor Treharne-Jones and Garrett P. Flynn

4.30-
5.00PM

Peer Networking

With All Attendees